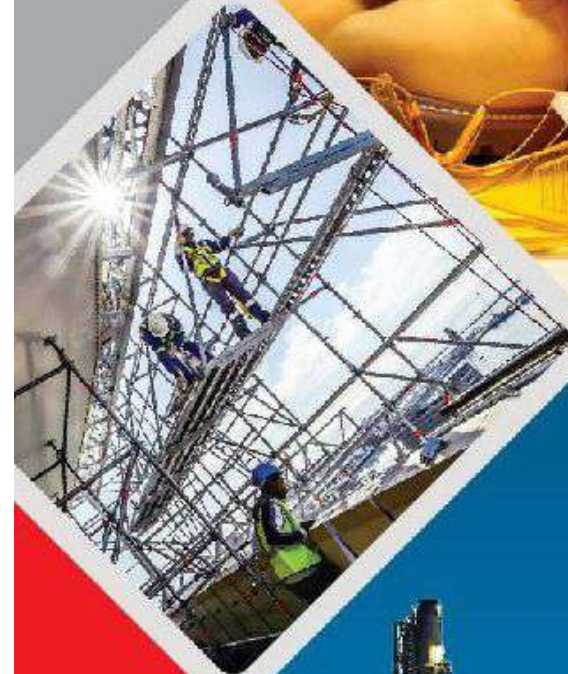
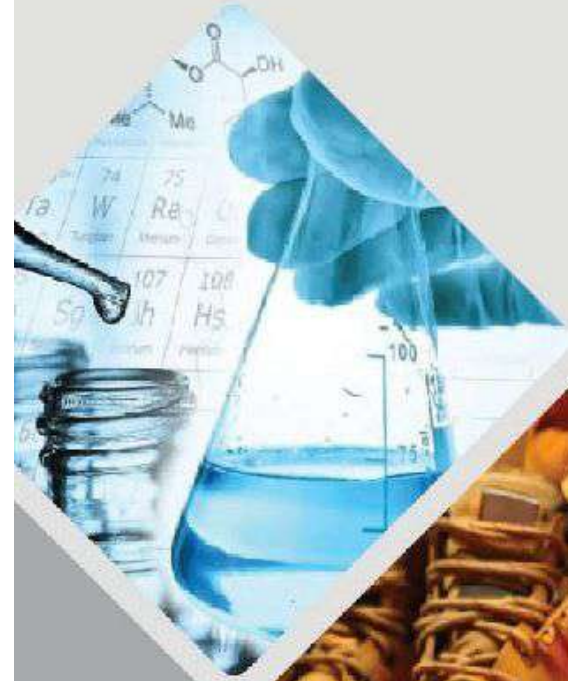


COMPANY PROFILE



شركة السعودية العالمية خط للتجارة
Saudi Global Tradeline Company





OBJECTIVES

- / To become a leader company in the same business area in Middle East by taking the unchanging idea of one station service.
 - / To affect later involved experience in standards.
 - / To establish and service more and more respectable companies in the world to realize our own sustainable development
-



VISION

Dedicated in distribution of raw materials and engineering goods in the domain Oil field, Petrochemical Heavy engineering and Civil constructions.



OUR MISSION

- / To satisfy your massive purchasing need by our professional provides.
 - / To deliver qualified goods to reach the purpose of saving your time and costs to help you realize more benefits.
 - / To link with Global sources
 - / To be a leader through value addition
 - / Commitment to customer delight
 - / Assure a green environment
-



OUR COMMITMENT

Whether it's the largest product innovation or a simple technical query we have made it our business to be there, supporting our clients to the best of our abilities.





OUR NETWORKS

We have a place of business ecosystem which brings with it, high levels of confidence. We have a presence in almost every continent on earth, thus assuring our clients of our prompt, first class service wherever their business may be located.



OUR TEAM

Other companies can offer the same products as us. They can also catch on to our innovations and value additions and offer the same. But the one thing they will never be able to come even close to duplicating are our knowledge assets our people.

We have a close-knit team of highly motivated and skilled marketing professionals with over 10 years of combined experience in marketing our products. But more importantly, each one of them carries the torch of customer orientation. A tradition that has seen them establish network and relationship channels for marketing and logistic, combining their industry knowledge and contacts along with an expertise in product development and technical services to forge lasting relationships with our customers.



SAFETY

We provide pinnacle importance to safety and environmental protection throughout our activities.





BACKUP SERVICE

We offer our clients reliable sources or key raw materials on a long term basis. Our sources have been checked and counter checked not just for quality and delivery capabilities but on stability too. In some cases we are also willing to assist our client's in creating M.O.U with suppliers.



END USER SELLING

Over the years we have built ourselves a formidable reputation and share a tremendous goodwill with end users. We have also gleaned valuable insights and command complete market information by virtue of our close proximity to the market. We can leverage these to effectively promote our client's products.



VALUE ADDITION

It is our endeavour to deliver beyond our client's expectations by constantly adding value.

Partnering with our customers for success and forging strong relationships. This is our overriding commitment.



TRADING DIVISION

(INDUSTRIAL MATERIALS SUPPLY & SERVICES)

Saudi Global Tradeline Co., is one of the pioneers in supply of power tools, Hand tools, Safety items, Coated & Bonded abrasive products, Oil field supply items, Construction machineries, Diamond saw blades, Core Drills, Bits, Building materials, welding Equipment & Welding

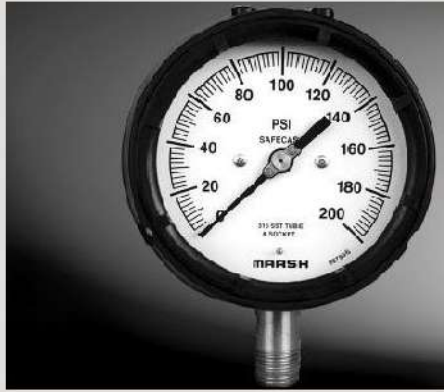
WELDING

- / Welding M/c
- / Electrodes - M.S., S. Steel
- / Wires - Mig, Tig
- / Brazing Rods
- / Electrode Holders
- / Earth Clamps
- / Gouging Torch/Rods
- / Soldering Equipment
- / Welding Cables
- / Glass - Dark, Clear
- / Hand Shields
- / Welding Helmets
- / Welders Umbrella
- / Welding Hoses
- / Welder's Aprons, Leg sleeves, Hand Sleeves
- / Regulators, Cable Lugs, Cutting torch, Nozzle, flashback arrestor
- / Nozzles
- / Welding Gauges
- / Fire Blanket

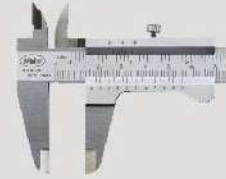


شركة السعودية العالمية خط للتجارة
Saudi Global Tradeline Company

INSTRUMENTS & GUAGES



- / Calipers (Dividers)
- / Ins. MISC
- / Micrometers
- / Vernier Calipers
- / Bore Gauge
- / Pressure Guages
- / Dial Indicators
- / Guages Misc
- / Feeler Gauge
- / Stainless Steel rulers



ELECTRICALS

- / Multi Meter
- / Clamp Meter
- / Cables - PVC, Rubber, Armoured Unarmoured
- / Conduit Pipes
- / Tube Lights & Fittings
- / Ballast
- / Extension
- / Halogen Lights & Bulbs
- / Sockets, Switches, Plugs
- / Surface Mounted Box
- / Splash Proof Couplers, Sockets
- / Bakelite Sheets
- / Electrical Tapes
- / Inspection Lamp
- / Timing Light
- / Cable Ties
- / Fans - Standing, Exhaust
- / Bending & Pulling Spring
- / Wire Clips
- / Electrical Putty
- / Ferrules



HAND TOOLS

- / ALLEN KEY SETS
- / BIT ROUTER SETS
- / BIT SETS
- / CHISSEL & PUNCH SETS
- / GAS CUTTING SETS
- / DIE PIPE SETS
- / DRIVER NUT SETS
- / DRIVER SCREW SETS
- / TORX SETS
- / FILES SETS
- / HOLESAW SETS
- / SOCKET SETS
- / TOOL SETS A/C
- / TOOL SETS MISC
- / TOOL SETS WITH BOX
- / WRENCH SETS
- / TAP & DIE SETS

**HAND TOOLS GENERAL**

- / BENDER KEY
- / BENDER PIPE / TUBE
- / BENDER PLATE
- / CHISEL WOOD
- / CUTTERS KNIPEX
- / ALLEN KEY | WRENCH
- / CUTTER BAR
- / CUTTER TOOL MISC
- / HAND DRILLS
- / CUTTER PIPES & TUBES
- / CUTTER | SHEAR CABLE
- / AUTO TOOLS
- / HAND TOOLS MISC
- / RATCHETS & EXTENSIONS
- / HAND PLANER
- / POUCH FOR NAILS
- / BEARING PULLERS
- / HOLE PUNCH, KNOCK OUT
- / CHALK REEL & POWDER
- / HAND RIVETERS
- / SCISSORS (TAILOR)
- / WALL SCRAPPERS
- / HAND SHEARS
- / METAL SNIPS
- / CARPENTORY SQUARE
- / WIRE STRIPPER / CABLE CUTTER
- / CHISEL & PUNCH COLD
- / TOOLS HAND FOR AIC
- / KNIFE

**HAMMERS - SLEDGE, BALL, BRASS, CLAW, MASON, RUBBER, PLASTIC
COMBINATION PLIER, NOSE PLIER, GRIP PLIER, VISES, CLAMPS & TRIPODS**



POWER TOOLS & ACCESSORIES

- / Magnetic Drilling Machines
- / Cordless Magnetic Drilling Machines
- / Beveling Machines
- / Sawing Machines
- / Steel Blades
- / Annular Cutters
- / Rotary Burrs
- / Air Die Grinders
- / Electrical Die Grinders
- / Angle Grinders
- / Mag Stick
- / Pilot Pins and accessories
- / Rotary and Hand Drills
- / Screw Drivers
- / Impact Wrenches
- / SDS Plus & CSDS Max Hammer Drills
- / Chipping and Demolition Hammers
- / Chop Saws
- / Cordless Drill Drivers
- / Circular Saws
- / Jigsaws
- / Planers
- / Sanders
- / Routers
- / Mitre Saws
- / Site Saws
- / Band Saws
- / Radial Arm Saws
- / Framing and Finish Nailers
- / Blowers
- / Heat Guns
- / SDS Plus & SDS Max Drill Chisel Bits



LIFTING EQUIPMENTS

TOYO VITAL

Liftek

**PMS
THAICO**

Crosby

- / Chain Blocks
- / Lever Hoists / Roto Lift
- / Plain/Gear Trolley
- / Cargo Nets
- / Web Slings - Double
- / Cargo Lashing Belts
- / Chains - GI, S.S
- / Hydraulic Pallet Trucks
- / Plate Lifting Clamps
- / Wire Rope with clips
- / Turfurs
- / Bow Shackles & D Shackles
- / Wire Rope Grips
- / Clevis Type Sling Hook
- / Connecting Links
- / Turn Buckles - Eye to Eye
- / Turn Buckles - Jaw to Jaw
- / Load & Hand Chains



ROPES & WIRES

- / Wire Ropes Steel / S. Steel Galv. / UnGalv.
Rotating / Non Rotating
- / Poly Ropes
- / Nylon Ropes
- / Manila Ropes
- / Cotton Ropes
- / Flag Ropes
- / Wire Rope Slings
- / Ferrules / Tube Clamps



BUILDING MATERIALS

- / Binding Wire, Galvanised, Black Anneal, S. Steel
- / Hessain Cloth
- / Barbed Wire
- / Ladders - Aluminium, Fiber Glass, Wood, Steel
- / Pickaxe, Shovels
- / Nails - Steel, Wire, Finishing
- / Wheel Barrows
- / Tarpaulins - Canvas, PVC
- / Silicon Sealants & Gun
- / Cement Sprayers
- / Chalk Line Reels, Powder
- / Crow Bars & Floats
- / Garden Racks
- / Hand Carts
- / Mesh - Aluminium, Steel, Stainless Steel
- / Pad Locks
- / Spirit levels
- / Trowels
- / Plump bobs
- / Wood Glue
- / Caster Wheels Swivels & Fixed
- / Hinges Brass, Steel, Aluminium
- / Garden Sprayer
- / Artist Brushes
- / Angle Brushes
- / Paint Rollers & Paint Brushes
- / Paint Scrappers S.Steel & M. S
- / Radiator Roller Brush
- / Telescopic Pole for Paint Roller
- / Buckets, GI & PVC
- / Polythene Sheets
- / Trolley - Gas Cylinder
- / Trolley - 2 & 4 Wheels



شركة السعودية العالمية خط للتجارة
Saudi Global Tradeline Company



BITS & HOLDERS

- / BITS DRILL MARBLE & GRANITE
- / BITS DRILL HSS & STAINLESS STEEL
- / BITS DRILL MASONARY
- / BITS DRILL MISC
- / BITS DRILL WOOD
- / BITS POWER
- / HOLDERS & ADAPTORS



ABRASIVES & SANDING ACCESS

- / EMERY CLOTH & ROLLS
- / CUTTING DISC & GRINDING DISC
- / SANDING DISC & PAPER
- / STONE CUP & WHEELS
- / STONE MISC (POLISHING)
- / BUFFING WHEELS & PADS
- / SANDING BELT



BLADES

- / BLADES CIRCULAR SAW
- / BLADES DIAMOND
- / BLADES HACKSAW
- / BLADES JIG SAW
- / BLADES KNIFE
- / BLADES MISC





PIPES & FITTINGS

- / Brass - Flare Compression, Pipe Fittings
- / Galvanized & Malleable Fittings
- / CS & SS Fittings
- / PVC, UPVC Pipes & Fittings
- / Mechanical Couplings
- / MS Fittings Threaded 2000, 3000LBS Welded Sch 40, 80
- / Stainless Steel Fittings Compression, Threaded
- / Valves - Brass, Carbon Steel, S. Steel

ANCHORS & FASTNERS

- / Bolts Nut - GI, MS, S.S (Part/Full Thread) Inches /mm
- / Washers - GI, MS, S.S. Inches/mm
- / Screws - Brass,Gypsum Csk/Pan
- / Self Drilling Screw Ms, S.S Csk/Pan
- / Machine Screws - Brass, GI, MS, S.S.,1,2,3 Mtrs Sizes
- / Threaded Bars - GI, MS, S.S.
- / U,L,J - Bolts C/W Nuts & Washers
- / Heavy Duty Fixings
- / Through Bolts
- / Projection Bolts
- / Eye Bolts
- / Hook Bolts
- / Spring Toggles
- / Roofing Bolts - GI, MS, C/W Nuts
- / Circlips Internal/External
- / Cotter Pins - Steel, S. steel. Brass
- / Rivets • Hold fast
- / Allen Bolts
- / Allen Grub, Socket set screw



CHEMICAL DIVISION



We are one of leading chemical distributor in Saudi Arabia committed to meet the requirements of various industries like Petrochemical, Oil & Gas, Power & Desalination utilities, Water treatment etc.

Head-quartered Dammam in the heart of Saudi Arabia, we enjoy a wide network of procurement /logistics offices and suppliers across the Middle-East, USA, Europe, China and India. Needless to say, this gives us an edge over competitors enabling us to offer better prices and services to our valued customers.

We are dealing with a wide range of products in order to meet the day-to-day requirements of our clients.

